




Springbank
Care Home


Spellman Care



“

Having cared at home for my mother along with other family members, it was a real upset when Mum broke her leg and required an operation. Post-operation, it was obvious that the care plan had to change. Springbank Care Home has made this transition so much easier than expected. Mum is happy and we are happy thanks to all the staff at the home.

Daughter of Resident, Carehome.co.uk, September 2023

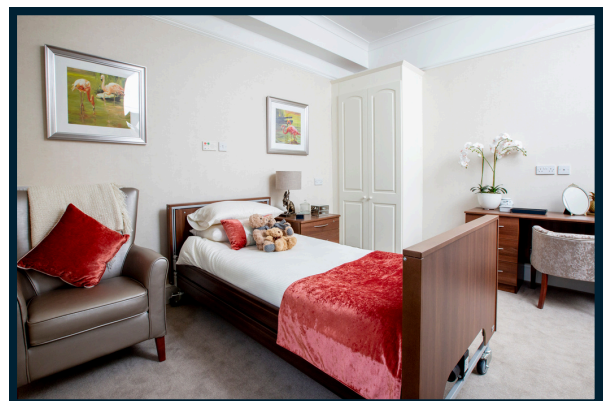


Welcome

Welcome to Springbank Care Home. We are a family-owned, award winning luxury Residential Care Home located in the small Yorkshire town of Silsden.

Our Home is set on its own grounds in a peaceful residential area, with accessible landscaped gardens surrounding the property.

Built in the 19th Century by local textile magnate George Jacques, Springbank was originally a grand family home with large formal gardens, having been refurbished and modernised, it is now a beautiful home combined with modern-day facilities, providing high-quality residential, dementia and respite care.





Our Home

Our home is comprised of four communities, Bluebell, Primrose, Snowdrop and Heather. We offer a small home experience, with just 40 residents, meaning there is a real sense of community within the home.

Our Care

Across all our communities we offer a variety of care services tailored to each residents' individual needs, including general residential care, dementia residential care & short break / respite care.

Getting to know our residents is the key to our person-centred approach to care. Life story work enables us to develop an individual care plan for each resident. For those who require assistance with medication, we have a carefully controlled system to safely manage and review the use of medication, whilst promoting independence. Our experienced, discreet care staff are on hand 24 hours a day to assist as required.



Our Bluebell & Primrose Communities

Providing the same high quality care as on our Bluebell and Snowdrop Communities, and home to just over 10 residents each, Primrose and Heather are secure and safe environments for residents living with dementia.

With a choice of large, spacious and thoughtfully designed communal spaces, residents are encouraged to socialise and interact with each other, promoting a sense of community and belonging.

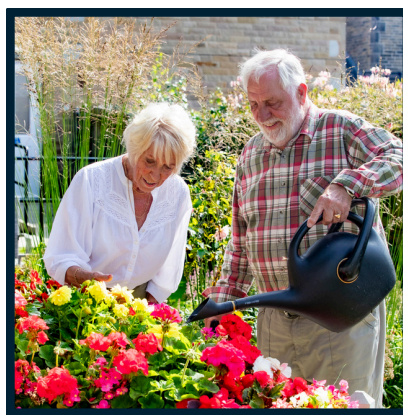
Outdoor Space

At Springbank, we're fortunate to have stunning views of the Aire Valley and a variety of outdoor spaces for our residents to enjoy. Our secure garden is directly accessible from Bluebell Community and has been expertly designed to provide a relaxing and stimulating environment. Residents can stroll through the garden, admire the flowers and plants, or simply relax on a bench and soak up the sun. With a flat patio area at the top, our front lawn is the perfect place for an afternoon picnic or a game of boules, it's also the ideal spot for a refreshing cup of tea whilst taking in the views.

Activities & Daily Life

Activities are an important part of the daily life at Springbank, with life being as eventful or as restful as you choose. Our dedicated team organise a varied programme of activities, whilst also supporting residents well-being. Residents can take part in as little or as much as they want to within the Home.

Our activities are varied, including choir groups, movement classes, arts and crafts workshops and regular visits to our purpose-built salon. Once a week, our small community also catches up during a coffee morning called 'My Best Teas'. In addition, we have a dedicated minibus & driver, allowing residents to go on trips and attend external activities regularly.



Springbank Care Home

Sample Activity Schedule

Monday	Tuesday	Wednesday	Thursday	Friday	Saturday	Sunday
Slippers & Nippers Intergenerational Stay & Play 10am - 12pm Handprints Nursery Movie Afternoon with Traditional Sweet Trolley 1.30pm - 3pm	'My Best Teas' Coffee Morning & Quiz 10.30am Wellbeing With Animals 1.30pm - 3pm Snowdrop	Minibus Trip All Day  	Hairdresser & Pamper 9am Silsden Methodist Church Thursday Club 1.30pm	'Trivial Pursuits' TV Moments Quiz 10.30am - 12pm Snowdrop Cheese & Wine Afternoon 1.30pm - 3pm Snowdrop	Neil Wilkinson Saxophonist 1.30pm Snowdrop 	Live Church Service Followed by Sunday Dinner 9am - 10am George Firth Singer / Musician 1.30pm Snowdrop 



My mum was in Springbank for just under a year and passed away in June this year. I cannot praise too highly every single person in this wonderful home. It is in every sense a home, not an institution, and all residents (and their relatives) are treated like family. Every member of staff treated my mum as if she was a loved friend or relative. With respect, kindness and gentleness, with her well-being, comfort and happiness at the heart of it all.

They have so many activities for those residents who want to take part, with two dedicated entertainment coordinators. The manager and assistant manager are warm and caring and just can't do enough for everyone. You can't go wrong if you entrust your loved one to these lovely people.

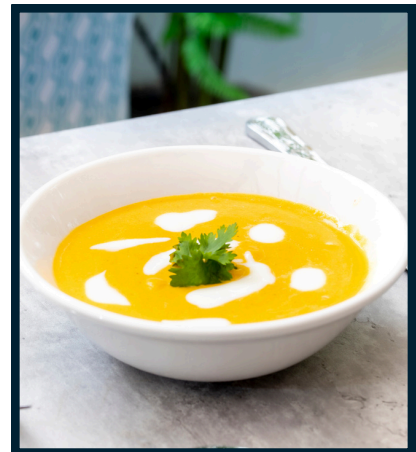
Daughter of Resident, Carehome.co.uk, July 2023



Dining & Food

Residents can expect a varied menu of locally sourced, freshly prepared, nutritious dishes created daily by our chefs. Personal taste, special requirements and cultural preferences are all catered for to the highest standards. A choice of hot and cold drinks are readily available throughout the day, and are served with delicious home baked treats.

With a choice of three dining areas, our residents can relax and enjoy their dining experience with beautiful views over the Yorkshire countryside. If residents prefer, they can also enjoy their meals in any of our communal spaces or in their bedroom.





Lunch Menu

Sample

Main

Western-style Chinese Sweet and Sour Chicken fresh from the Wok, oozing with flavour from each bite, delicately complimented by aromatic Basmati Rice

--

Why not try our plant-based Sweet and Sour dish for those who prefer a meat-free option (V)

--

Slow-cooked, melt-in-the-mouth, beef and Maris Piper Potato Pie, topped with homemade pastry

Served with seasonal buttered vegetables

Dessert

Homemade lightly spiced Apple Crumble served with a lashing of custard, double cream or Ice-cream

Choose from a Selection of Ice-creams and Sorbets

--

Cheeseboard with a selection of Crackers and Tangy pickles

Drinks

Selection of Fresh Fruit Juices, Teas and Coffees.

If you would like to supply your own alcoholic beverage, our staff would be happy to prepare and serve this

Did you know that we utilise an Induction hob, which is recognised as far more efficient and environmentally friendly?



Springbank in Silsden is flawless. Can't praise everyone enough who works there - a true team with a fantastic leader at the front. So welcoming, helpful, and inspiring to be shown what a good care home looks like. We would not hesitate to recommend Springbank. The care, love and hard work are very visible when you visit. Keep making a difference; it is very much appreciated.

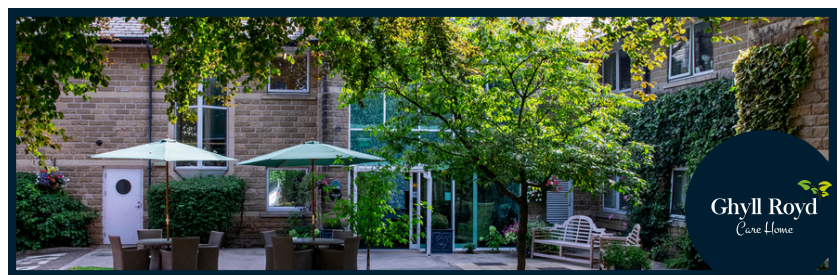
Daughter of Resident, Carehome.co.uk, September 2022



Spellman Care

We are a family-run business, which has been operating nursing and residential homes in the local area for over 30 years. There are four homes within the group, all of which are proud to be rated as 'Good' by the Care Quality Commission.

Across our homes, we are proud to have achieved various awards and accreditations...





The little things are the big things

01535 282424

enquiries@springbanksilsden.co.uk

www.spellmancare.co.uk