




Steeton Court
Nursing Home



“ My mum stopped in Steeton Court only a short time until she passed away. The level of care and compassion from all the staff whilst she was there was impressive and first class. I cannot thank them enough for all their hard work dealing with Mum during a difficult time.

Son of Resident, Carehome.co.uk, November 2023

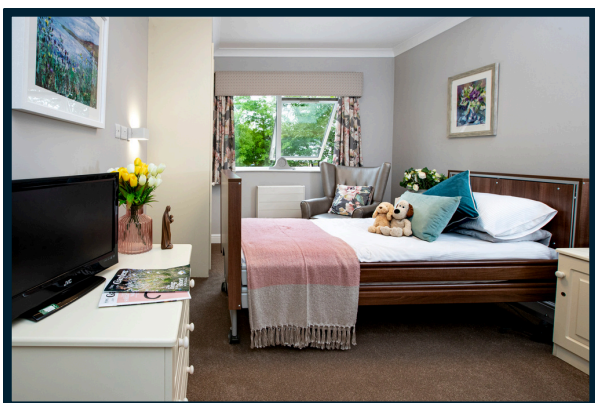


Welcome

Welcome to Steeton Court Nursing Home, an award winning luxury nursing home on the edge of the famous Yorkshire Dales.

Steeton Court was established in the village of Steeton over 30 years ago, being the first home to be opened by the Spellman family.

Steeton Court is located in a peaceful and leafy residential suburb, surrounded by beautiful gardens with trees and wildlife. To the rear of the home a beautiful woodland is home to many squirrels and deer, offering a peaceful and calming outlook for residents.





Our Home

Steeton Court has four community areas, Heathcliff, Emily, Branwell and Charlotte, across which we can accommodate 62 residents. Our communities are designed to create a safe and positive environment for our residents. All our bedrooms have en-suite facilities and are stylishly decorated. Residents are encouraged to personalise their rooms and make it feel like a home from home. Our communal areas are light and spacious, designed with comfort and social interaction in mind.

Charlotte, Branwell and Emily Communities

Our Charlotte, Branwell and Emily Communities provide 46 residents with General Nursing Care and Palliative Care. Available 24 hours a day, 7 days a week, our registered nurses and highly trained care staff work closely with local Primary Care Teams to ensure residents receive only the best quality care.

We take great care to get to know residents straight away, understanding their background, likes and needs, always working to improve on each residents personalised care plan.



Heathcliff Community

Bordered by a tranquil stream and woodland, our Heathcliff Community supports up to 15 residents living with dementia. Heathcliff Community boasts an enclosed garden area and conservatory overlooking the woodland, as well as a calming low stimulus sensory lounge.

Residents living on Heathcliff Community are provided with the same high quality care as our General Nursing Communities, with the addition of Registered Mental Health Nurses.


We take time to get to know our residents as individuals to ensure that we deliver the very best person-centred care. Our Activities Team hold regular dementia friendly, cognitively stimulating activities on Heathcliff Community, using recollections, reminiscence and sensory-based activities to gain insight into a resident's life stories. Residents will also be invited to take part in the wider activities programme throughout the home, with all care staff being fully trained on dementia and how to support individuals to live well.

We ensure that the environment we offer changes with the needs of our residents, which is why we continually develop Heathcliff Community with those living with dementia in mind.

Activities & Daily Life

We have three Activity Coordinators who design a full programme of activities and events to suit our residents' needs. Residents can take part in as little or as much as they want to within the home. Every week, we have sessions for hairdressing and beauty to ensure that our residents can enjoy a pamper within our purpose-built salon. Other activities which our residents enjoy include poetry, arts and crafts, knitting, board games, quizzes and gardening. In addition, we have a dedicated minibus & driver, allowing residents to go on trips and attend external activities regularly.





Steeton Court

Nursing Home

Sample Activity Schedule

Monday	Tuesday	Wednesday	Thursday	Friday	Saturday	Sunday
Newspapers & Natter - Every Morning, 9am - 11am Video Calls Available Every Day Upon Request						
<p>Armchair Exercise With Music 11.15am - 12.15pm</p> <p>Guess That Word! Branwell Lounge 2pm - 4pm</p> 	<p>Minibus Trip Bolton Abbey Railway</p> <p>Steeton Choir Practice 2pm - 3.30pm</p> <p>Tabletop Games 3.30pm - 4.30pm</p> 	<p>VE Day Decorations 11am - 12pm</p> <p>Wellbeing Wednesday Activity: 2.30pm Hydration Station: All Day</p> <p>Paul VE Day Entertainment! 2pm - 4.30pm</p>	<p>Moov With Oona 11am - 12.30pm</p> <p>Hairdresser (AM)</p> 	<p>Pamper & Poetry 11am - 12pm</p> <p>Bingo! Branwell Lounge 2pm - 4.30pm</p> 	<p>Saturday Natter Group Branwell Lounge 11am - 12pm</p> <p>Quiz & Board Games 2pm - 4.30pm</p> 	<p>Knitting Group Wool Crafts 11am - 12pm</p> <p>Dominoes Branwell Lounge 2pm - 4.30pm</p> <p>Movie Afternoon Emily Lounge 2pm - 4.30pm</p>

“

Since Mum has been under the care at Steeton Court, she has had full professional and caring support from all staff. Great care and empathy has been shown at all times to Mum and visitors. We're always made welcome and all staff are approachable. I would love to think that all vulnerable ageing people receive the same care as my mum has had. Great work! Team work makes the dream work.

Daughter-in-law of Resident, Carehome.co.uk, November 2023





Dining & Food

The Home prides itself on offering exceptional food, using local suppliers and on-site chefs to cook all meals from scratch and to a high standard. All food is nutritious and adjusted to residents' tastes and dietary requirements. A choice of hot and cold drinks are readily available throughout the day, and are served with delicious home baked treats.

With a choice of three dining areas, our residents can relax and enjoy their dining experience with beautiful views over the woodland surrounding the home. If residents prefer, they can also enjoy their meals in any of our communal spaces or in their bedroom.





Menu

Sample

Lunch

Tender Braised Steak, bathed in a Flavorful Onion Gravy and accompanied
by Creamed Potatoes and Seasonal Vegetables

or

Spiced Sweet Potato, Spinach & Tomato Bake

--

Decadent Jammy Sponge Pudding with Luscious Custard

Evening Meal

Savory Sandwich Collection

or

Warm Pork Pie Slices with Minted Mushy Peas

or

Spicy Black Bean Soup

--

Luscious Strawberries Folded into Sweet Cream

Available Every Day

Jacket Potatoes, Egg and Chips, Omelettes, Salads, Sandwiches and Sausage
& Chips

“

When it became clear that my friend needed full-time, skilled nursing care, we visited several local homes. Without doubt, Steeton Court was the best choice, from the friendly yet very professional first visit, right through to her final weeks, I felt she was in a safe, caring environment, which attended to details.

As a friend who visited occasionally (not a member of the family) I cannot speak for the day to day or details of care and support. I was impressed by the way the home allowed my friend to hold our reading group meetings in a communal room, so that she could host and continue her usual routines. We were all made very welcome.

I was also delighted by the way the staff put up my friend's many decorations for the Coronation around her room and helped her dress up for the day. They also made it possible for her to host her own birthday party, little things that make a big difference and helped make this care home into a real home.

Friend of Resident, Carehome.co.uk, September 2023





Spellman Care

We are a family-run business, which has been operating nursing and residential homes in the local area for over 30 years. There are four homes within the group, all of which are proud to be rated as 'Good' by the Care Quality Commission.

Across our homes, we are proud to have achieved various awards and accreditations...





The little things are the big things

01535 656124

enquiries@steetoncourt.com

www.spellmancare.co.uk